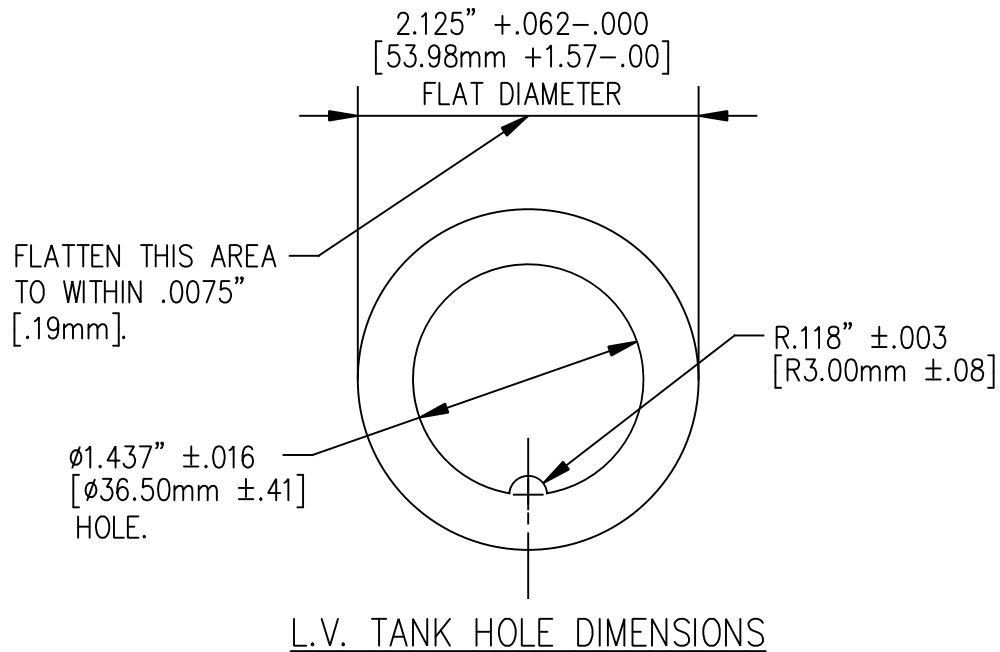
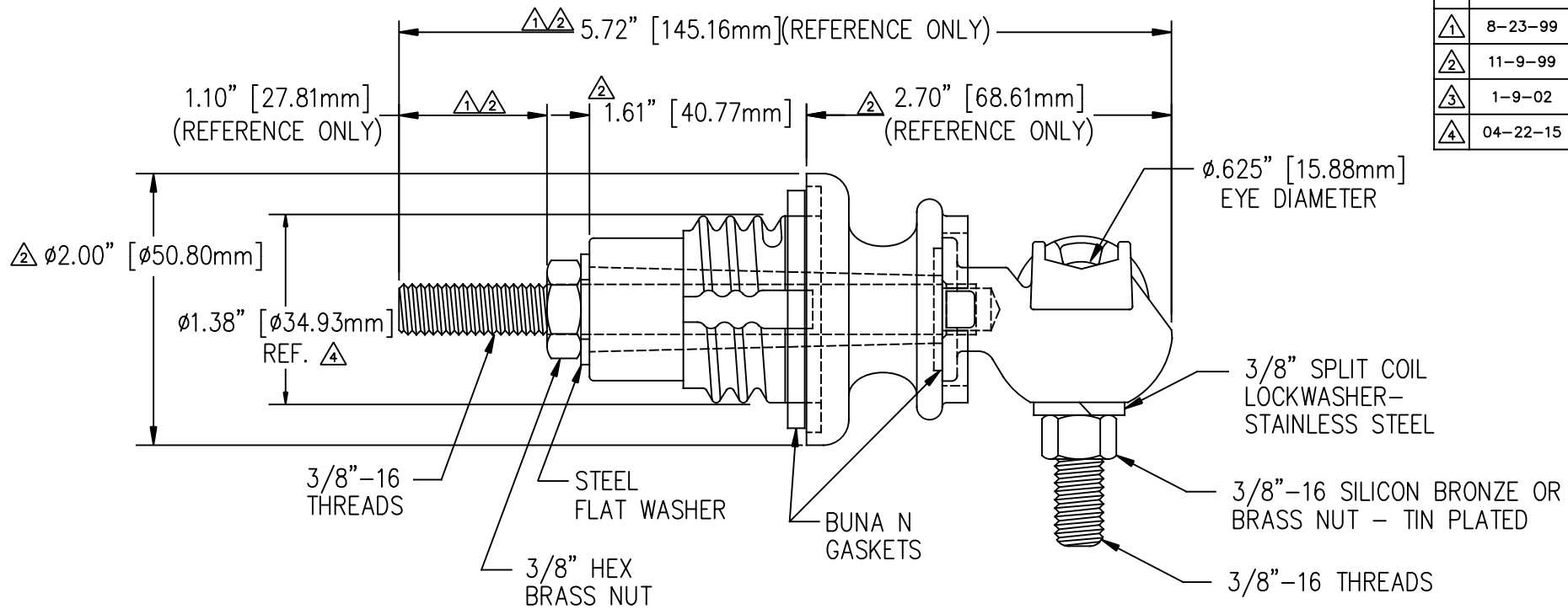
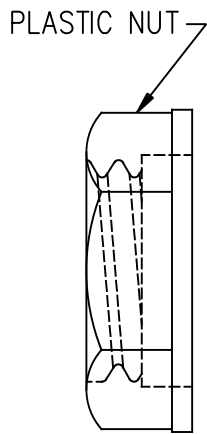


REVISIONS

NO.	DATE	ECN #	REMARKS	BY	APPD.
1	8-23-99		EDITED DIMENSIONS.	CJT	LHE
2	11-9-99		REDREW CAP AND EDITED DIMENSIONS.	CJT	LHE
3	1-9-02	HJ01-231	REMOVED TORQUE NOTE.	CJT	LHE
4	04-22-15	HJ14-269	Ø1.38 REF. WAS Ø1.39	CLS	BLB



MATERIAL:

STUD - COPPER CDA 11000
 BODY - CDA 84400 TIN PLATED
 EYEBOLT - CDA 95500 TIN PLATED

TOLERANCES (EXCEPT AS NOTED)	
DECIMAL	± .032\"/>
FRACTIONAL	±
ANGULAR	± 2°



H-J ENTERPRISES, INC.		
3010 HIGH RIDGE BLVD. HIGH RIDGE, MO. 63049 USA PHONE 1-636-677-3421 FAX 1-636-376-1915		
15 KVA L.V. BUSHING ASSEMBLY NON-PORCELAIN INSULATOR		
MATERIAL (SEE ABOVE)		
CHK'D	APP'D	DRAWING NO.
DRAWN BY TLH	DATE 4-22-96	SCALE N.T.S.
		AS1000-014